

[HOME](#)[ABOUT US](#)[PRODUCTS](#)[DISTRIBUTORS](#)[CONTACT US](#)[Home](#) > [Products](#)[Liquid Flux](#)[Solder Paste](#)[Flux Paste](#)[Cleaner](#)[SMT Adhesive](#)[Silver Metallization
Paste](#)[Conductive Paste](#)[Carbon Paste / Copper
Paste](#)[Strip Mask](#)[Heat Curing Solder
Resist for FPC](#)

Products

Asahi Chemical Research Lab (M) Sdn. Bhd. provides solutions to all your special requirements and different kinds of applications in your SMT assembly, PCB assembly as well as semiconductor assembly. Our strong R&D team has been actively developing eco-friendly products and improving existing products to reduce the impact to the environment and community.

Asahi Product Range:

Liquid Flux & Thinner



Asahi Speedy Flux is used to attached SMT components to PCB board and suitable for wave soldering, selective soldering, wire harness etc. Various types of products are available for wide range of process applications. Product types include rosin, synthetic resin, low solid, halogen-free, VOC-free and water soluble type.

[View More](#) | [Top](#)

Solder Paste



Asahi Solder Paste is developed for fine pitch reflow soldering application. This product use spherical shaped solder powder with low surface oxidation mixed with high reliability flux system. Alloy types include the common SAC, SnBi and patented SN100C. Available for stencil printing and dispensing application.

[View More](#) | [Top](#)

Flux Paste



Asahi Flux Paste is suitable for BGA balls attachment and rework use. Product types include halogen-contained and halogen-free.

[View More](#) | [Top](#)

Cleaner



Asahi Cleaner is specially designed to remove flux residues from flux spray equipment, stencil, conveyor belt/finger and wave pallet/jig by manual cleaning or machine cleaning via ultra-sonic bath equipment. Product types include eco-friendly water-based and solvent-based.

[View More](#) | [Top](#)

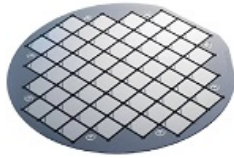
SMT Adhesive



Asahi Adhesive is heat curing type epoxy resin based adhesive used to attach SMT components (MELF, Chip & QFP) to PCB surface before wave soldering or reflow. Product applications include dispensing and printing type, high temperature or low temperature curing.

[View More](#) | [Top](#)

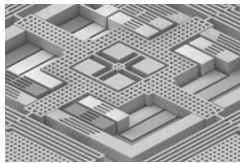
Silver Metallization Paste



Silver Metallization Paste is a silver conductive paste modified for dispensing application in Silicon Wafer cell metallization process.

[View More](#) | [Top](#)

Insulating Paste



Plating resist ink for electro-less Ni/Au plating, photo solder resist ink for flexible substrate, resist ink for touch panel, thermosetting ink for flexible substrate etc.

[View More](#) | [Top](#)

Conductive Paste



Carbon Paste / Copper Paste for PTF Conductor on rigid / flexible board and Silver Paste for touch screen, membrane circuit and ITO-PET film etc.

[View More](#) | [Top](#)

Strippable Mask



Strippable masking material which is heat resistant and for touch panel.

[View More](#) | [Top](#)

For further information on the products, please [contact us](#) today!

Asahi Chemical Research Lab (M) Sdn. Bhd.

32, Hala Rapat Baru 24,
Kawasan Perindustrian Ringan Kinta Jaya,
31350 Ipoh, Perak, Malaysia.
TEL: +60-5-3111600 FAX: +60-5-3111599

Copyright © 2012 - 2019 Asahi Chemical Research Lab (M) Sdn. Bhd. All Rights Reserved.



ISO 9001:2015 certified
Certificate Number: 2197



ISO 14001:2015 certified
Certificate Number: 2767

| [Location Map](#) |